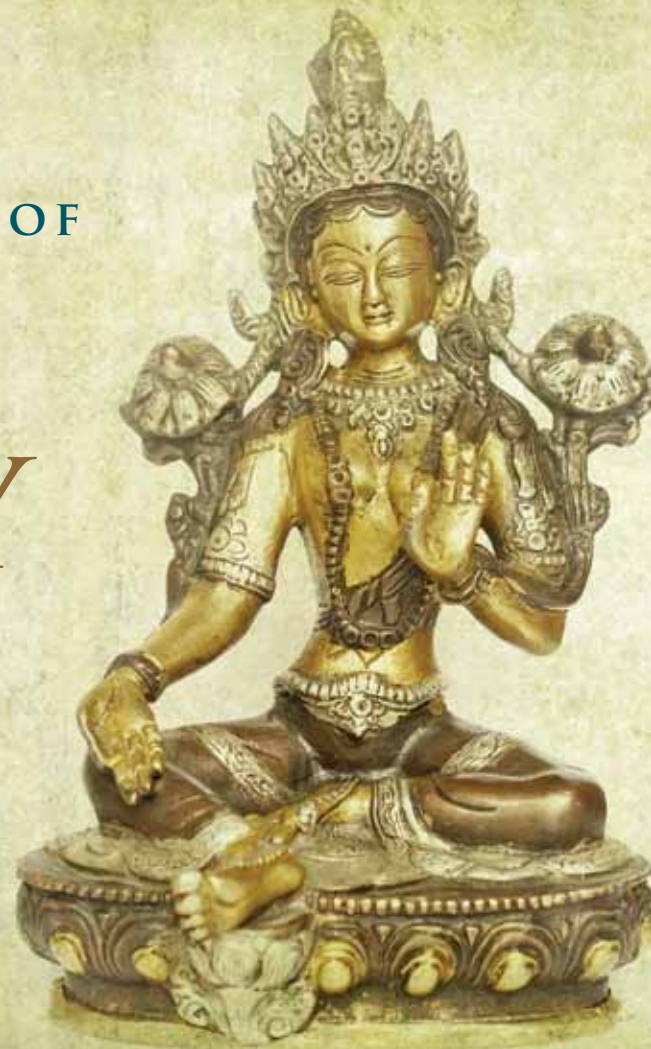




KUNZANG ODSAL PALYUL  
CHANGCHUB CHÖLING

CELEBRATING A YEAR OF  
*TARA'S*  
ACTIVITY

A N N U A L  
R E P O R T  
2 0 2 0



CENTER OF VAJRAYANA BUDDHISM



*The seal of the Palyul lineage*

## WHAT'S INSIDE

1

Welcome

2

Letter from our  
Spiritual Director

5

Mission Statement and  
Organizational Structure

6

Highlights of 2020

24

Communicating  
the Vision

24

KPC Worldwide

26

Financial Summary

28

Conclusion

## WELCOME

Welcome to Kunzang Odsal Palyul Changchub Chöling (KPC)—“Glorious Dharma Continent of Absolute Clear Light”—a Palyul center and hub of compassionate activity in the Nyingma School of the Vajrayana Buddhist tradition.

Located just outside the nation’s capital in the Maryland countryside, KPC was founded by Buddhist Master, Her Eminence Jetsunma Ahkön Norbu Lhamo, and has been operating since 1988. Jetsunma is the first Western woman to be enthroned as a lineage holder in the Vajrayana Buddhist tradition.

This edition of the 2020 Annual Report celebrates Tara (the female aspect of enlightenment) and the resilience of our community in this pandemic year as we learned to do things differently.





# LETTER FROM JETSUNMA AHKÖN NORBU LHAMO

## CELEBRATING A YEAR OF TARA'S ACTIVITY

She is here. The Saint Of New York Harbor. This year we installed a model of the Statue of Liberty—the Colossus of New York—at KPC to celebrate our diversity. Everyone is welcome here. She is our version of Tara, the display of enlightenment in female form. She is a goddess. At this particular time, she should be deeply honored.

I think she will become, even here, part of history. She is 15.5 feet tall. You don't even have to get out of your car to see her. She is wondrous to me. You can almost hear her breathe! Please Lady, bless us as we reach out to you and you to us.

I have a special relationship with the lady of the harbor. I believe in her. All my people came through that harbor. It's so funny. But my head itches when I think about her. She and I are one. My grandparents came through her. I have their records. It moves my heart. It's not that my people were so special. But they were mine. And I love them. Many of you probably had people come through there as well.

Those of you that understand, she has so much Bodhicitta (wisdom and compassion) and she teaches us. She makes us all one. I know that is more Western than Eastern, but so what? It is the truth.

Compassion is one of the foundational teachings of Mahayana Buddhism. From the Mahayana view, we should seek to love all sentient beings equally.

The poem that accompanies the Statue of Liberty, is a true Mahayana Buddhist prayer:

*Give me your tired, your poor,  
Your huddled masses yearning to breathe free,  
The wretched refuse of your teeming shore.  
Send these, the homeless, tempest-tost to me,  
I lift my lamp beside the golden door!*

Mahayana prayers always include the wish to be of benefit to all sentient beings. The 'Caretakers Vow' I wrote is also a Mahayana prayer.

*We, the Caretakers of the Earth, dedicate ourselves to the liberation and salvation of all sentient beings. We vow to work for the liberation of planet earth from the clutches of suffering, poverty, famine and death. We vow to return in whatever form necessary, under whatever necessary conditions, so that all earth creatures can be liberated from the ravages of cyclic existence.*

You can read the complete vow on the next page. Remember, one tiny candle flame can drive the darkness from an entire room. Be the flame. Start now. There's nothing to wait for. Be the light.

I pray that we stay one people. One family. Never give up and never separate. Always be together. Be One.

*Jetsunma Ahkön Norbu Lhamo  
Spiritual Director,  
Kunzang Odsal Palyul Changchub Chöling*

## THE CARETAKERS VOW

**W**e, the Caretakers of the Earth, dedicate ourselves to the liberation and salvation of all sentient beings. We vow to work for the liberation of planet Earth from the clutches of suffering, poverty, famine and death. We vow to return in whatever form necessary, under whatever necessary conditions, so that all Earth creatures can be liberated from the ravages of cyclic existence.

We vow to work for world peace. We vow to work for the raising of all the nations of Earth into a state of union and ultimately into the blessed state of supreme wisdom, the wisdom that is beyond all description. We vow to work toward a great Universal Quickening of mind and heart, leading all beings to a state of clarity, a state in which Chenrezig, the Buddha of Compassion, is enthroned within all hearts and within the planetary heart.

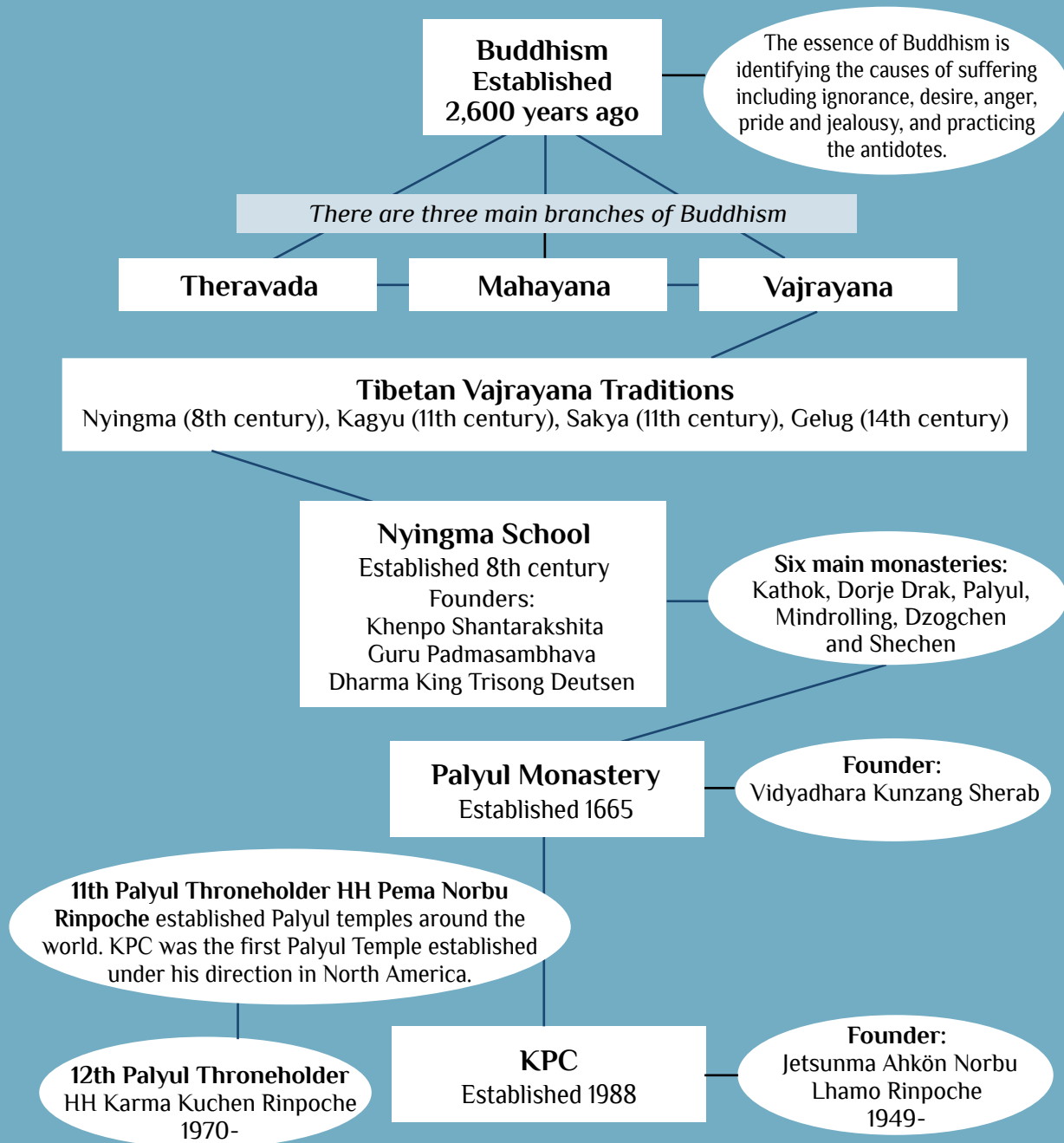
We vow to offer as food and drink to all sentient beings the clear, sweet Dharma so that they may feast and be satisfied at last. We offer our bodies, our speech, and our minds to be filled like bowls with Dharma that in our joy we will spill over into the waiting hearts of all our brethren.

May their suffering cease forever.

To all the blessed Tathagatas, to all the root Lamas, to all the Sangha, to all the caretakers, grant us the strength to continue, the clarity to overcome self-cherishing, the determination to return forever until we are the last, and finally, the grace to find our way home. May the Dharma take root in the West, on the Earth, and in the hearts of all sentient beings. So be it.

The merit of the dedication of these vows and of the building of this place of practice is dedicated to all parent sentient beings who have gifted us with fire in our hearts and light on our way.

# WHERE KPC SITS WITHIN BUDDHISM



# MISSION STATEMENT AND VALUES

Our Mission is to alleviate suffering through compassionate activity in the world by:

- ◆ Making Buddhist teachings available
- ◆ Offering a place of spiritual refuge including sites of pilgrimage and prayer
- ◆ Offering prayers and spiritual practices to those in need
- ◆ Nurturing the community beyond our boundaries
- ◆ Caretaking the natural environment under our stewardship.

# ORGANIZATIONAL STRUCTURE



# HIGHLIGHTS OF 2020

*The pandemic changed our engagement with our communities. For the first time in KPC's history we moved the prayer vigil online and closed public access to the Temple to help minimize the spread of COVID. Where one door closes another opens. We opened new online doors and many more doors to outside activities, all involving strengthening and growing our community and compassionate activity and outreach.*

## MAKING BUDDHIST TEACHINGS AVAILABLE ONLINE

**T**he traditional teachings of the Buddha are continually offered at KPC, usually at large public events and through smaller instructional programs, such as classes in Foundational Buddhist Thought, Stabilizing the

Mind meditation classes, and classes designed for children.

Once the Temple closed in early 2020 all teachings were offered online.

As part of the larger Palyul practice lineage there were

additional online resources for anyone interested in receiving teachings from other centers, including the annual USA Palyul retreat between July 10th and August 10th.

## Visiting Buddhist Teachers Bestow Blessings

In 2020, KPC was honored to host the following teachers online and web-streamed on various platforms:

Khenpo Pem Tsheri Sherpa on “Dissolving Fear.”

Atira Zeoli continued her monthly Beginning Buddhism teaching series.

Lama Pasang offered guidance on our various practices.



*Khenpo Pem teaching via Zoom and Facebook Live.*



*Lama Pasang in KPC's prayer room.*



*Atira Zeoli teaching the Beginning Buddhism series via YouTube and Facebook Live.*



# The 24-hour Prayer Vigil for Peace and the End of Suffering

*May 24-hour prayer continue and bring boundless merit and blessings.*

Jetsunma Ahkön Norbu Lhamo

The prayer vigil for peace and the end of suffering is the cornerstone of KPC prayerful activity. Since the 18th of April 1985, 24 hours a day, 365 days of the year, prayers are said on behalf

of all beings by members of the KPC community in Maryland. In 2020 a total of 8,760 hours of prayer were offered.

The prayer vigil ordinarily takes place in the prayer

room. When the KPC Maryland Prayer Room closed for the first time since 1985, the 24-hour prayer vigil continued unbroken in two hours sessions from participants homes on Zoom.

## CONTINUING PRAYERS AND PRACTICES

Approximately 80 practices or teachings were offered each month. Prayer requests for these practices were received online and read daily.

While the Temple building was closed it was still alive with practitioners. The beautiful prayer room was still in view on camera as a core group of ordained residents of the Temple, continued anchoring the daily practices. The same dedication from practitioners and hours of prayer continued.

New practices streamed online including practices that focused on healing, especially a daily condensed Medicine Buddha offered by Jetsunma, which were particularly appropriate for this COVID time. Healing

practices included:

- ◆ Naga Puja focusing on healing and caring for the earth and the elements. This practice increases harmony, peace and prosperity.

- ◆ Daily Tsog practices focused on dispelling the causes of COVID and for healing those suffering from it.

- ◆ The inaugural Pray for the Planet Event (focusing on Chime Sok Thik practice) to extend one's life force.

Other regular practices included:

- ◆ Bi-weekly Teachings from Jetsunma's archive of classes.

- ◆ Weekend meditation classes.



*Medicine Buddha image from Thangka (sacred wall hanging) at KPC.*



*Ani Rinchen giving a weekend meditation class on YouTube.*

- ◆ Weekly Smoke Puja Offering.
- ◆ Practices on auspicious days of the Buddhist calendar.
- ◆ Undertaking the annual Vajrakilaya Bhum retreat.
- ◆ Undertaking a daily practice for the deceased.



*Smoke puja (Riwo Sang Chod) practice held both inside and outside.*

## MILESTONES OF PRAYER AND COMPASSION IN 2020

In the face of challenges, KPC had much reason to celebrate an array of achievements.

### GROUNDS

- ◆ A Statue of Liberty was placed on the grounds of KPC Maryland.
- ◆ The Quan Yin Garden was built at the entrance to the Amitabha Peace Park in Arizona.
- ◆ Solar panels were installed on the roof of the main temple in Maryland.
- ◆ The entire back of the building at the Maryland Temple was re-painted.

### GRANTS

- ◆ KPC was a successful grant recipient for the Montgomery County Food Production Gardening

Grant Program and received \$25,000 to start a vegetable garden. The Empowering People through Food Gardening project aims to address food insecurity and provide education and training in sustainable growing and harvesting of vegetables.

- ◆ KPC was a successful grant recipient of the Federal Paycheck Protection Program for \$39,875 enabling it to continue its mission in this pandemic year.

### OUTREACH

- ◆ KPC MD significantly increased its donations to local area food banks including 4,333 pounds of food donated to the Western Upper Montgomery County food bank (WUMCO).
- ◆ KPC MD undertook a project to make face masks

for distribution to health care and frontline workers. Over 1,000 masks were made.

### ONLINE

- ◆ KPC Podcast of Jet-sunma's teachings and other Palyul Nyingma teachers who have taught at KPC was launched.



*One of the podcast site displays for the KPC teaching podcast launched this year.*

### VISITORS

- ◆ Daily visitor numbers at the Amitabha Stupa and Peace Park in Sedona Arizona surpassed 200.

# Preservation and Dissemination of a Spiritual Legacy

## OUR ORDAINED COMMUNITY OF MONKS AND NUNS

KPC is distinctive for having a very large community of ordained (monks and nuns). KPC has 30 monks and nuns.

KPC ordained offer their services in a variety of beneficial ways including memorial services and house blessings, and general support to

the wider community of visitors. Ordained also provided



*Ordained performing puja at KPC MD.*

information and support to visitors on the Temple Grounds.

In the Buddhist tradition a strong emphasis is placed on providing services for members of the community who have lost loved ones. KPC ordained provide memorial

services and ritual ceremonies and these on-site pujas were streamed to family and friends of the deceased.



*Altar set up for Memorial Service.*

## TEACHING OUTREACH

KPC is a magnet for many diverse groups wishing to find out more about the different aspects of the temple, whether it's Buddhist philosophy and stupas, or the ecology of the Peace Parks.

Since its inception KPC members have hosted a diverse range of students of all ages from learning and religious institutions.

During this pandemic year face-to-face teachings transformed into online teachings to ensure the safety of all participants

Prior to the onset of the pandemic restrictions which closed the Temple doors, KPC Maryland hosted the following student groups in 2020:

- ◆ Temple Beth Ami Synagogue eighth graders

- ◆ Westmoreland Congregational Church eighth to tenth graders

- ◆ Milton Gottesman fourth graders

During the pandemic members of KPC's outreach and teaching community spoke on Buddhist perspectives online to the following school and university groups:

- ◆ Archbishop Spalding High School question & answer



- ◆ Catholic University sociology class
- ◆ George Washington University Day of Service Freshman meditation workshop
- ◆ Temple Beth Ami

Also, during this time a socially distanced and masked meditation class and talk was given outside at Poolesville Commons in Maryland.

*It was amazing learning the ways in which these meditations may help us overcome hatred in unjust situations or calm our minds to make better and clearer choices in any situation.*

— Feedback from a George Washington University Freshman commenting on the KPC online Buddhism and meditation workshop with Atira Zeoli.

## AUDIOVISUAL AND DIGITAL ARCHIVE

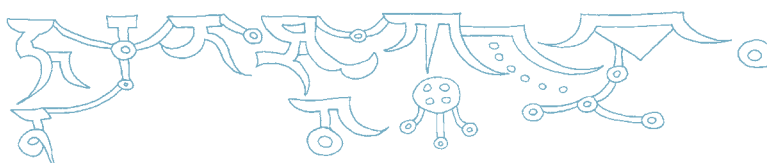
KPC Maryland is an important site for the preservation of Vajrayana Buddhist teachings in the West. Since 1983, KPC has been committed to maintaining and preserving an audiovisual archive of the teachings that have been bestowed by Jetsunma and the many revered teachers in Vajrayana Buddhism, some now deceased, who have taught at KPC. Thousands of hours of audio and video, and thousands of photographs of Buddhist teaching events

are archived and stored at KPC. Many of these teachings are offered via web-streaming and on various social media platforms. In addition, KPC responds to numerous requests from both students and teachers from other centers for specific teachings from the archives.

- ◆ In 2020 KPC Archives provided archival recordings and photos to the Yangthang Tulku Rinpoche archives project.



*Ani Aileen, archivist at KPC, behind the cameras at the Lady Liberty fishpond.*





## A year of celebrating Tara

On the 22nd of March the KPC Temple in Maryland closed its doors to the public. In its challenging year, beneficial activity was the key to keeping us strong. In Tibetan Buddhism, Tara, the female aspect of enlighten-

ment, embodies activity. The activity of Tara was evident in the many inspirational projects and tasks we undertook this year.

None of this activity would have been possible without

the guidance of our Spiritual Director, Jetsunma Ahkön Lhamo. The arms and legs of this activity were the wonderful volunteers who turned up to help in so many ways.

### WHO IS TARA?

Tara is considered to be the mother of all the Buddhas, beloved for her swift and compassionate activity that focuses on liberating beings from fear, anxiety, and danger. As a Bodhisattva, she made the vow that she would always return in female form to benefit sentient beings. Meditating on Tara helps us awaken to our innate Buddha nature and cultivate her virtuous qualities.

Although she comes in many forms, she is typically depicted with a beautiful appearance, smiling, and adorned with a crown. The 21 Tara practice invokes the wisdom and compassion from her 21 manifestations, each embodying different virtues, qualities, and symbolism.



*The 21 Tara Altar at KPC Maryland.*

Following are photos of four key activities we undertook in 2020:

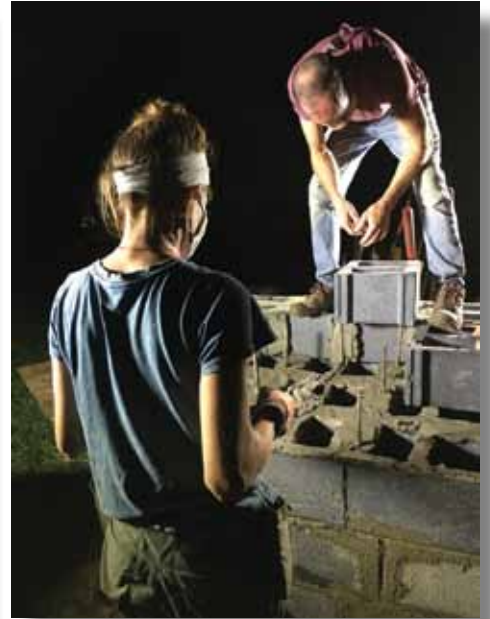
- ◆ Installing an inspiring 15.5 foot consecrated replica of the Statue of Liberty.
- ◆ Keeping the grounds and the building exteriors beautiful. The grounds were open dawn to dusk both in Maryland and Sedona, thus providing a place of peace and refuge for many in difficult times.
- ◆ Through significant increases in food donations to local food banks, we were able to enhance our collective ability to feed those experiencing food insecurity. We expanded the kind of food we were able to offer to include fresh vegetables.
- ◆ A range of socially distanced outdoor practices occurred during the year.

## STATUE OF LADY LIBERTY

Here are some highlights of the installation of the statue of Lady Liberty and the final result:



*Statue is moved to the site by Tam Nguyen and friends.*



*Building the pedestal for the statue.*



*Group effort: the delicate moment of moving the pedestal onto the slab.*



*Tam and Jacob confer about the next steps in placing the statue on the pedestal.*



*The statue is placed on the pedestal.*





*Tara painting the statue.*



*Jetsunma consecrating the Statue of Liberty.*



*Next steps: completing the fish-pond and laying stone work.*



*A fishpond is installed around the statue.*

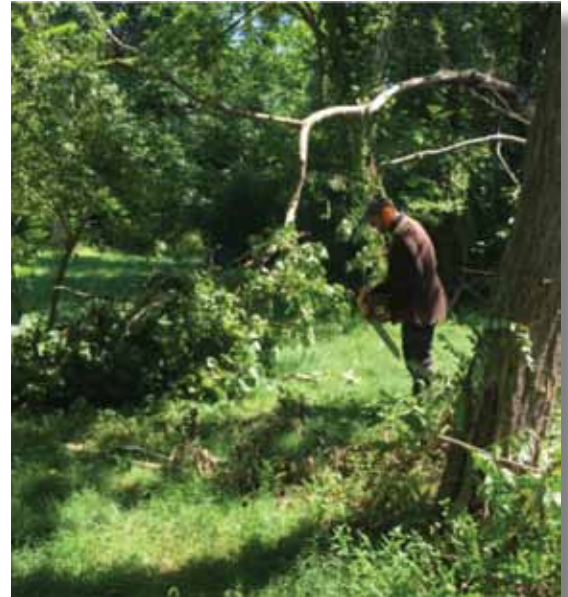


## CARING FOR THE TEMPLE AND GROUNDS:

From the summer to the fall of 2020, many many volunteers worked hard to keep the Temple grounds and Peace Park open and accessible to all.



*Sithmini re-painting a sign at the Stupa.*



*Erich at work in the Peace Park.*



*Boy Scouts dismantling a bridge.*



*Volunteers at work painting the back of the temple. See photo on page 23 for the beautiful result!*



## VEGETABLE GARDEN & FOOD OFFERINGS



*Claire, standing on the initial plot that marks the beginning of establishing the community vegetable garden.*

*‘WHERE ONCE THERE WAS LAWN THERE WILL BE FOOD.’*

—Claire Seesman, lead gardener for the KPC *Empowering People through Food Gardening* project funded by Montgomery County.



*Food offerings from KPC going to local area food banks.*



*Jetsunma has been instrumental in driving KPC’s increased food offerings for the food insecure. This photo shows some of Jetsunma’s food and gift donations for Christmas.*

## FIRST OUTDOOR PUJA AFTER TEMPLE DOORS CLOSED

The first major outside socially distanced prayer gathering at KPC in this COVID year was a practice focusing on the female (Dakini) aspect of enlightenment.



*Atira and Zach participating in the practice.*

*Ordained participating in the practice.*



*Ani Zing (center) offering incense at the commencement of the practice.*



# Hands-on-Help

## ANIMAL CARE AND THE GARUDA AVIARY

Jetsunma has spearheaded animal care and rescue activities since the establishment of KPC—from cats and dogs to iguanas and turtles. The longest-running example of this commitment to care and rescue is the Garuda Aviary, a lifelong sanctuary for abused and abandoned parrots focusing mainly on the care of parrots with moderate to severe and chronic behavioral problems.

The Aviary started when Jetsunma began caring for Tashi, a Moluccan cockatoo with an anxiety disorder. Tashi’s rehabilitation began a lifelong pursuit to pioneer parrot welfare, education and conservation. In 1998, Jetsunma Ahkön Lhamo, Claire Waggoner and Christopher Zeoli started Garuda Aviary in response to the heartbreakingly high frequency with which companion parrots are abandoned.

Garuda Aviary is home to several types of macaws, cockatoos, African grey parrots, Amazon parrots and conures. Each of them has a story—many filled with abuse and neglect. Starting with one parrot under Jetsunma’s care,

the Garuda Aviary has grown to 53 parrots.

Garuda Aviary has always made itself primarily available to the most desperate cases which include mistreated and abandoned parrots. The aviary



*Cockatoo residents enjoy the flight cage.*



*Meeting and greeting in the flight cage.*

focuses strictly on giving lifelong sanctuary to unadoptable parrots. Parrots that are “unadoptable” include parrots with hyper-aggressive or neurotic behavior, and parrots that are undesirable as pets due to typically unruly parrot behavior. Providing lifelong



*A strong bond forms between humans and parrots over the lifetime of care the parrots receive in the aviary.*



sanctuary to unadoptable animals means that adoption fees are not a source of funding. Nevertheless, Garuda Aviary has endured and grown to become one of the most noteworthy lifelong parrot sanctuaries in the United States.

Garuda Aviary continues to educate the public on a group and individual basis about the needs of parrots in our homes and in their

natural environments. With specialized knowledge, experience, and a robust volunteer program, Garuda Aviary continues to be a proactive force for beneficial change in the world of parrots and people. For more information go to <https://garudaaviary.org/>

*Volunteers are vital to the helping care for the parrots.*



## CARING FOR OUR COMMUNITIES—DIVERSE COMMUNITY, DIVERSE OUTREACH

As an organization, KPC is committed to interfaith engagement. It is an active member of the Montgomery County Faith Advisory Committee and much of this involvement this year was conducted online. KPC



*Claire Waggoner, KPC President and member of Faith Community Advisory Council Executive.*

civic activities and duties in Montgomery County includes the following:

- ◆ Executive Committee membership on the Faith Community Advisory Council (Montgomery County), including working with the Montgomery Council Executive.
- ◆ Co-Chair of the ‘Neighbors in Need Working Group’ (Montgomery County) incorporating the areas of Hunger, Health Care, Aging and Prison outreach.
- ◆ Membership on the Montgomery County Faith Community Working Group.
- ◆ Members of a spiritual care network to lend support during disasters and other emergencies.

- ◆ Part of the Faith Leaders Response Team (Montgomery County)—responding to critical events.

For more information on KPC’s membership on the Faith Advisory Community Council Executive Committee go to <http://montgomerycountyinterfaithmd.org/>

KPC is also a long-standing member of the International Buddhist Committee (IBC) of Washington, DC.

## CELEBRATING SPECIAL DAYS

There are many auspicious days in the Buddhist calendar that bring pilgrims from diverse cultural backgrounds to the Maryland Temple.

The beginning of the lunar calendar marks the arrival of the most pilgrims to KPC, especially members from the Vietnamese, Chinese and Nepalese communities in February. This event occurred just prior to the closure of the Temple due to the pandemic. Many

busloads of pilgrims were still able to enjoy the bless-

ings of the spaces inside and outside the Temple.



*Many pilgrims come to the Temple during the Lunar New Year which occurs in February most years.*

## HANDS ON HELP – DIRECT OUTREACH

Direct physical outreach to our wider community was limited by pandemic restrictions. The programs that were directly impacted were face-to-face visits with prison inmates and the attendance of ordained at house and business blessings and memorial services.

However, ordained continued to contact prisoners by phone and letters, and provided memorial services online. While the sandwich lunches ceased, overall the provision of food donations in the upper Montgomery County and Frederick Counties was significantly

ramped up with both fresh and perishable produce being donated and delivered weekly to distribution sites.

### PRISON PROGRAM OUTREACH

KPC's prison program continued to facilitate Buddhist worship and study in two Maryland institutions, Maryland Correctional Training Center and Jessup Correctional Institution. The Buddhist practitioners in these two groups have been practicing and studying between 10 and 20 years. There has been correspondence with inmates from four Maryland

state institutions, and Colorado State Penitentiary.

### FEEDING OUR COMMUNITY

Food provision remained a vital part of KPC's activity. These programs reflect an ongoing long-term commitment at KPC to providing food for those in need.

We continued with our sandwich delivery program to the PEP (People Encouraging People) office in Rockville, Montgomery County, Maryland for people experiencing homelessness until COVID restrictions closed our Temple doors in March. Approximately 600 sandwiches were supplied before we ended this program.



Two key initiatives expanded our food donations this year:

- ◆ We expanded our food donation program to

WUMCO (Western Upper Montgomery County Help) and

- ◆ Added Frederick Mission to our giving.

Two to three times a week food donation runs were made to WUMCO and weekly to Frederick Mission.

## HANDS-ON HELP — VOLUNTEERS

KPC runs on the energy and enthusiasm of volunteers. KPC's pool of volunteers is drawn from regular temple participants and the wider community including high school and university students, employees of local businesses, and members of hiking groups and trail clubs. Families often come together to volunteer as a group.

A big thanks to all those individuals who helped and the groups that offered their time. This year the following

groups volunteered at KPC Maryland.

- ◆ Mid-Atlantic Hikers, Campers and Climbers Group
- ◆ MOM'S Organic Market in Rockville: Day of Service volunteers
- ◆ Scout groups from Frederick and New Market

KPC was also fortunate to have signmaker extraordi-



*Lauren and her fellow Scouts created and installed 16 much needed trail signs in the Peace Park.*

naire, Life Scout, Lauren Doring. Lauren is one of the first females in Frederick County to earn the rank of Eagle Scout.

We acknowledge the passing of William "Bill" Spencer, a great friend, volunteer and supporter of the Amitabha Stupa and Peace Park. Bill donated the large mahogany Buddha statue that overlooks the Amitabha Stupa. And in recent years, after returning to Sedona from overseas travel, he was devoted to maintaining and restoring the statue. Bill passed away from COVID-19 on July 26, 2020.



*Bill Spencer with his dog Kele in front of the Buddha statue he donated.*



*MOM'S volunteers planting in the Peace Park.*

# PRESERVING SACRED ARCHITECTURE: STUPAS

The construction of stupas dates to the time before the Buddha, over 2,500 years ago. KPC is dedicated to preserving this ancient and sacred form of the display of enlightenment in the physical world.

## KPC STUPAS IN MARYLAND

Twenty-five stupas, monuments of enlightenment, grace the 65 acres of wildlife

preserve, walking trails and meditative gardens in Poolsville, Maryland.



*Aerial view of the Stupa Park and surroundings in Maryland.*

The focal point of the Peace Park in Maryland is the golden 38-foot-tall Migyur Dorje Stupa. Jetsunma dedicated this stupa to the eradication of diseases for which there is no known cure.

Maintenance and upkeep of the stupas is an ongoing priority. Major stupa refurbishment and preservation is ongoing in order to keep these architectural symbols of the enlightened mind in good repair. On average, 800 hours of volunteer labor is devoted every year to the care of these stupas.



*Volunteers hanging prayer flags at the Migyur Dorje Stupa.*



*Repairing small stupas at the Palyul Peace Park in Maryland.*





*One of the small stupas located in the Palyul Peace Park.*

## KPC STUPAS IN SEDONA

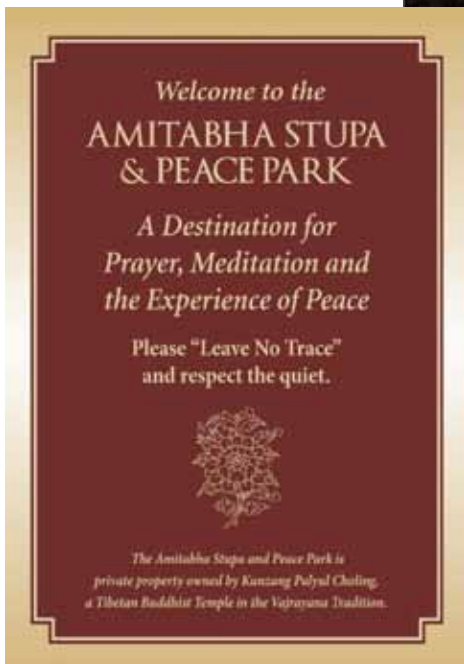
In Sedona, Arizona, the Amitabha Stupa is the centerpiece of the 14-acre Stupa Peace Park. The Amitabha Stupa Peace Park is a place of refuge and spiritual sustenance for residents of Sedona and visitors alike. An estimated

70,000 people visited the Park in 2020.

The Amitabha Stupa continues to receive consistently high visitor ratings and positive reviews on Trip Advisor and was awarded a Trip Advisor Certificate of Excellence.



*Amitabha Stupa Peace Park.*



*Sign at Amitabha Stupa and Peace Park.*



*Joe and friend after repairing the Tara Stupa at the Amitabha Stupa and Peace Park.*



## PROTECTING OUR NATURAL ENVIRONMENT

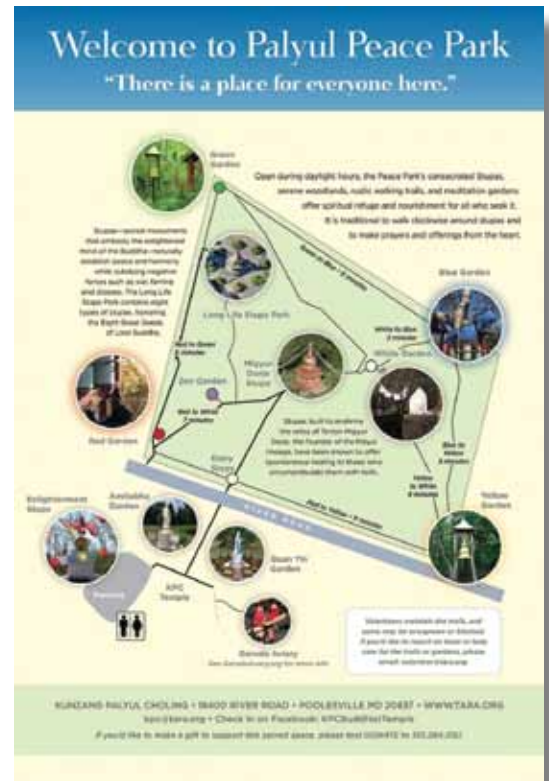
With over 200 acres of reclaimed farmland and wilderness, KPC in Maryland and Arizona is committed to preserving the values of the land for the benefit of current and future generations. These lands are home to numerous species of wildlife which are protected from hunting as part of the commitment to preserve wildlife habitats.

KPC is continually seeking ways to be environmentally sustainable. Efforts include:

- ◆ The first constructed wetlands in Maryland to treat on-site waste.
- ◆ Applying erosion prevention strategies on the trails in the Palyul Peace Park (Maryland) and at the Amitabha Stupa and

Peace Park (Arizona).

- ◆ Inviting visitors to ‘leave no trace’ in the Amitabha Stupa Peace Park.



*This year we updated our map of the Peace Park in Maryland.*



*Prayer Wheel near pathway at Amitabha Stupa & Peace Park.*



*One of the small creeks running through the Peace Park in Maryland.*





*Solar panels were installed on the main temple, a major step in reducing electricity bills as well as feeding solar energy back into the electricity grid. And notice the beautiful fresh paint at the back of the temple!*

◆ Feeding energy back into the grid via the Maryland Temple’s solar panels.

KPC Maryland is located in an environment that supports a diverse variety of trees, some of which are well established, and areas

from wetlands to well drained, sunny meadows. It is also home to a variety of macrofungi and edible plants.



*Flowering Sumac*

As Jetsunma has said: ‘We’ve learned that we have uncovered a gold mine of medicines here, and food, growing on the grounds and in the trees, and as far as I can see it will be in perpetuity.’



*Wrinkled Peach Mushroom*



*Mayapple blossom*

# COMMUNICATING THE VISION

Under the direction of our Spiritual Director, Jetsunma Ahkön Norbu Lhamo, KPC has embarked on building plans for a new temple

on the existing site. In 2020 we began permitting work for the first stage of the Capital Campaign in relation to building the new septic treatment facility.

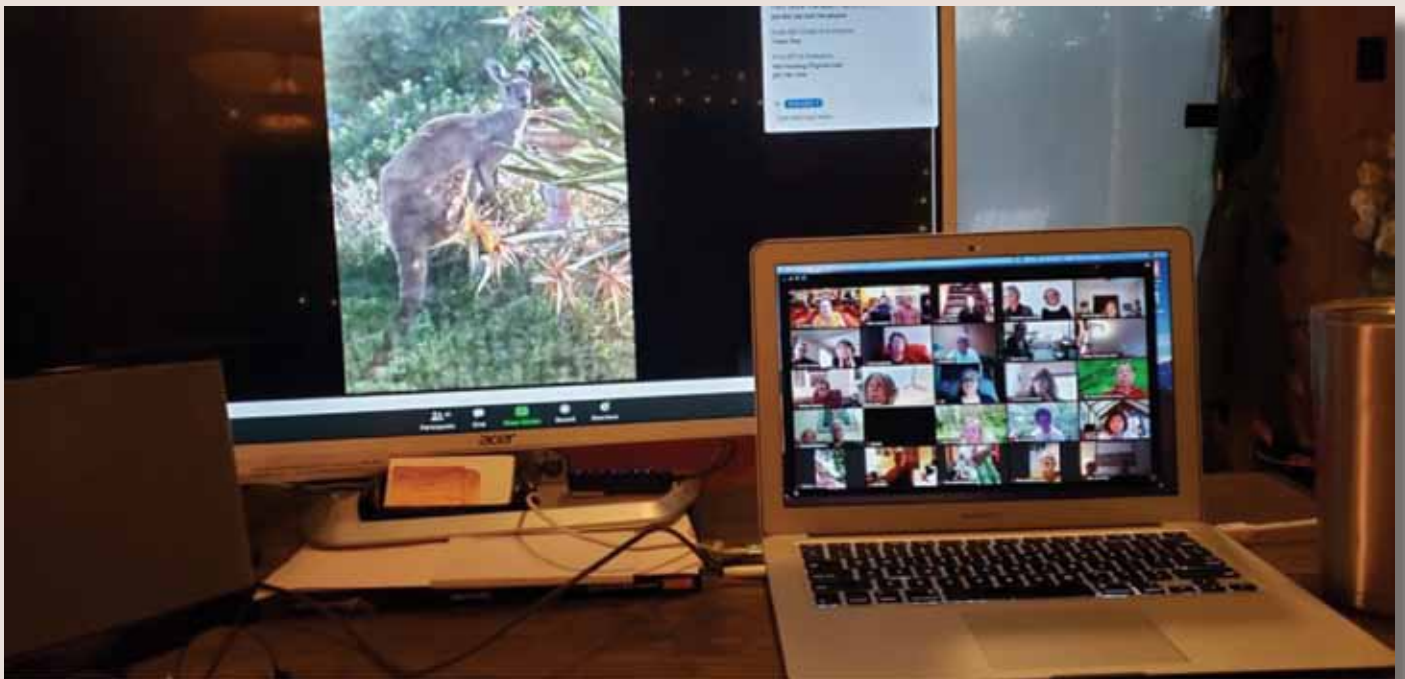
For more information on our future plans contact Claire Waggoner, President, Kunzang Palyul Chöling on (928) 713-3522 or write to us at [kpc@tara.org](mailto:kpc@tara.org).

# KPC WORLDWIDE

KPC has students from all over the world who access teachings online either

through live web-casts on U-stream, Facebook Live and YouTube. KPC also has an Instagram, Facebook

and Twitter presence. This year we continued our online world-wide sangha meetings on Zoom.



*World-wide sangha meeting on Zoom.  
The theme of this meeting  
was KPC Australia.*

## CENTERS

KPC is home to five physical sites of practice in North America and Australia. Each center has different qualities shaped by location and history. KPC Maryland is a primary site of the Palyul lineage in the U.S., as well as being the home for the 24-hour prayer vigil. Maryland and Arizona offer the benefits of accessing stupas, while all centers provide an avenue for students to connect with visiting Palyul teachers and access opportunities for practice.

### KPC IN MARYLAND

**Date of establishment:** 1988

**Location:** Situated an hour away from the Nation's Capital, Washington D.C. The main KPC Temple and accompanying Peace Park (comprising a total of 72 acres) is located at 18400 River Road, Poolesville, Maryland 20837

**For more information:** phone 1-301-710-6259  
e-mail [kpc@tara.org](mailto:kpc@tara.org)  
or visit our web-site  
[www.tara.org](http://www.tara.org)

### KPC IN ARIZONA

**Date of establishment:** 2000

**Location:** Situated among the startling red rocks of the Sedona area, the 14-acre Amitabha Stupa and Peace Park is located at 2650 Pueblo Drive, Sedona Arizona 86336

**For more information:** phone 1-877-788-7229  
e-mail [kpcsedona@tara.org](mailto:kpcsedona@tara.org)  
or visit our web-site  
[www.tara.org](http://www.tara.org)

### KPC IN CALIFORNIA (PALYUL WEST)

**Date of establishment:** 2013

**Location:** Situated in scenic Santa Barbara

**For more information:** phone 1-805-569-9072  
e-mail [Palyulwest@tara.org](mailto:Palyulwest@tara.org)  
or visit our web-site  
[www.tara.org](http://www.tara.org)

### KPC IN AUSTRALIA

**Date of establishment:** 2000

**Locations:** Students are currently located in the Northern Territory, South Australia, Victoria and Queensland.

**For more information:** e-mail [kpcaustralia@gmail.com](mailto:kpcaustralia@gmail.com)  
or visit our web-site  
[www.tara.org](http://www.tara.org)

### GARUDA AVIARY

**Date of establishment:** 1999

**Location:** Poolesville, Maryland

**Director:** Christopher Zeoli

**For more information:**

**Web-site:**

[garudaaviary.org](http://garudaaviary.org)

**Contact information:**

[GarudaAviary@earthlink.net](mailto:GarudaAviary@earthlink.net)

# FINANCIAL SUMMARY

Kunzang Palyul Chöling 2020 Financial Report (Not Audited)

---

## INCOME

---

Direct Public Support.....	\$251,876
Restricted Revenue .....	\$164,209
Event Revenue.....	\$35,196
Merchandise Sales.....	\$10,411
Fundraiser Revenue .....	\$90,379
Capital Campaign.....	\$167,410
Rental Income .....	\$30,090
Grants .....	\$64,875
Other Income .....	\$5,243
<b>TOTAL INCOME.....</b>	<b>\$819,689</b>

---

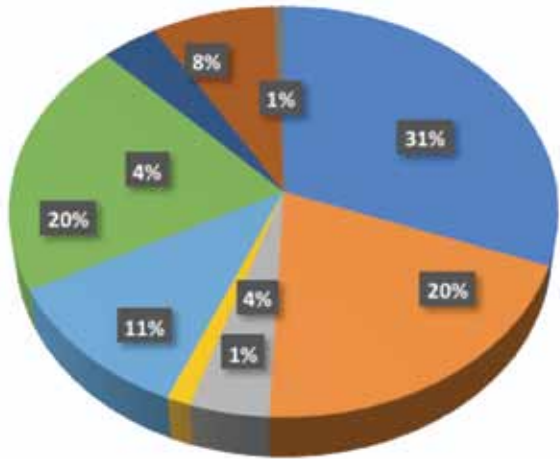
## EXPENSES

---

Insurance .....	\$32,787
Payroll Expenses.....	\$229,255
Professional Fees .....	\$182,781
Program Expenses .....	\$29,310
Capital Campaign Expenses .....	\$37,813
Repairs and Maintenance .....	\$51,674
Interest Expense .....	\$43,908
Other Expenses.....	\$43,036
Utilities.....	\$23,113
Computer and Internet Expenses.....	\$12,147
Supplies & Equipment .....	\$27,354
<b>TOTAL EXPENSES .....</b>	<b>\$713,187</b>



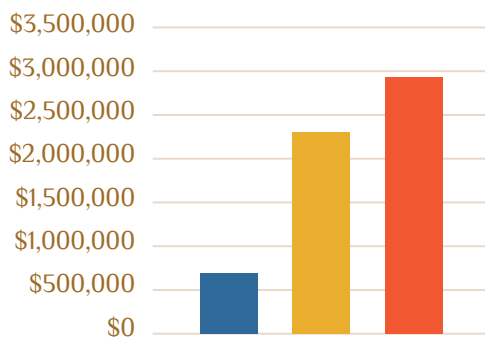
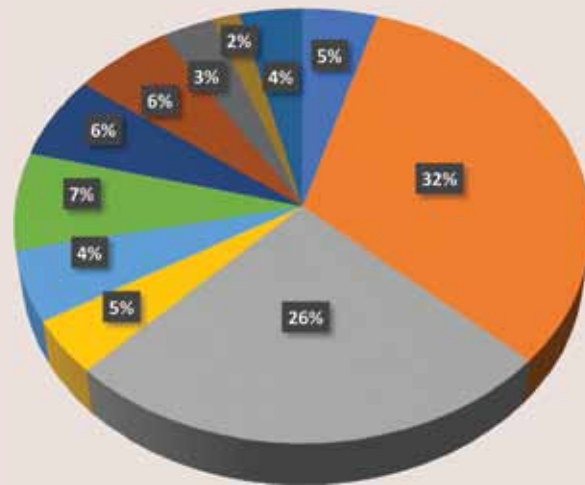
### 2020 INCOME CATEGORY AS A PERCENTAGE OF TOTAL INCOME



- Direct Public Support 31%
- Restricted Revenue 20%
- Event Revenue 4%
- Merchandise Sales 1%
- Fundraiser Revenue 11%
- Capital Campaign 20%
- Rental Income 4%
- Grants 8%
- Other Income 1%

### 2020 EXPENSE CATEGORY AS A PERCENTAGE OF TOTAL EXPENSES

- Insurance 5%
- Payroll Expenses 32%
- Professional Fees 26%
- Program Expenses 5%
- Capital Campaign Expenses 4%
- Repairs and Maintenance 7%
- Interest Expense 6%
- Other Expenses 6%
- Utilities 3%
- Computer & Internet Expenses 2%
- Supplies & Equipment 4%



### 2020 TOTAL DOLLAR ASSETS\*, LIABILITIES, EQUITY

- Liabilities \$613,962
- Equity \$2,301,952
- Assets \$2,877,984

\*Assets are defined as land values

# CONCLUSION

## A GREAT OUTPOURING OF LOVING CONCERN

Every day people of all spiritual traditions all around the world are benefitted by KPC activities in both ordinary and extraordinary ways. This has been accomplished thanks to the kindness of people like you.

There are many ways to partner with KPC. For more information on partnering, please contact our President Claire Waggoner on 928-713-3522 or at [kpc@tara.org](mailto:kpc@tara.org).

Our avenues for direct donations include:

- ◆ Online donations via our website <http://www.tara.org> or Paypal (send to [donations@tara.org](mailto:donations@tara.org))

- ◆ Checks mailed to KPC, P.O. Box 88 Poolesville, MD 20837

- ◆ Stocks, insurance, real estate, wills (planned giving): Please contact us at [kpc@tara.org](mailto:kpc@tara.org)

With so much to accomplish, and so many more generations to come, we wish to thank all of our donors from our hearts for your kindness and continuing support.





*By this effort,  
may all sentient beings be free of suffering.*

*May their minds be filled  
with the nectar of virtue.*

*In this way, may all causes  
resulting in suffering be extinguished,*

*And only the light of compassion  
shine throughout all realms.*

— JETSUNMA AHKÖN NORBU LHAMO



**Spiritual Director:** Jetsunma Ahkön Norbu Lhamo

**Throne Holder:** H.H. Karma Kuchen Rinpoche,  
12th Throne holder of the Palyul Lineage

**Visit** [www.tara.org](http://www.tara.org)

**Phone:** 301-710-6259

**E-mail:** [kpc@tara.org](mailto:kpc@tara.org)

**Facebook:** Kunzang Palyul Chöling – KPC Buddhist Temple

**Twitter:** @KunzangPalyul

**Street Address (Temple and Palyul Peace Park) – Maryland:**  
18400 River Road, Poolesville, MD 20837 USA

**Mailing address:** Kunzang Palyul Chöling, PO Box 88,  
Poolesville, MD 20837 USA

**Street Address (Amitabha Stupa and Peace Park) – Arizona:**  
2650 Pueblo Drive, Sedona, AZ 86336

**Mailing address:** Kunzang Palyul Chöling, PO Box 1142,  
Sedona, AZ 86339 USA

**Facebook:** AmitabhaStupa

**Phone:** 877-788-7229

Kunzang Palyul Chöling is a 501 (c)(3) charitable organization,  
Federal Tax ID # 52-1501476

KPC is a Bronze-level Guide Star Exchange participant,  
demonstrating our commitment to transparency through sharing information